

เครื่องดูดฝุ่นแบบเป็ยกและแห้ง  
**NT 65/2 Ap \*EU**

**KÄRCHER**

เครื่องดูดฝุ่นแบบเป็ยกและแห้งสำหรับการใช้งานอย่างมืออาชีพ รุ่น NT 65/2 Ap มีมอเตอร์ 2 ชุด ให้กำลังสูง และให้กำลังดูดที่คงที่ตลอดเวลาเนื่องจากการทำความสะอาดไส้กรองที่มีประสิทธิภาพโดยใช้อากาศเป่า

**อุปกรณ์มาตรฐาน:**

- Suction hose 4 m
- Metal suction tube, 2 x 0.5 m
- Filter bag Paper
- Wet and dry floor nozzle 360 mm
- Crevice nozzle
- Drain hose (oil-resistant)
- Auto shutdown when max. level is reached
- Flat pleated filter Paper
- Bend
- Sturdy bumper
- Push handle
- Protection class II
- Castor with brake
- Filter cleaning ApClean (semi-automatic filter cleaning system)
- Maintenance-free suction turbines 2 piece(s)



**Order number: 1.998-**

**Technical data**

อัตราการไหลของอากาศ (ลิตร/วินาที)	2 x 74
แรงดูด ( มิลลิบาร์/กิโลปาสคาล)	254/25.4
ความจุถังเก็บสิ่งสกปรก (ลิตร)	65
กำลังไฟฟ้า (วัตต์)	max. 2760
ขนาดความกว้างมาตรฐานของสายดูด (มม.)	40
ความยาวสาย (ม.)	10
ระดับความดังเสียง (เดซิเบล)	73
ชนิดของถังเก็บฝุ่น	
จำนวนมอเตอร์	2
ความถี่ (เฮิร์ตซ์)	50-60
ระดับแรงดัน (โวลต์)	220-240
น้ำหนัก (กก.)	20
ขนาด (ยาว x กว้าง x สูง) (มม.)	600x480x920

## Details

### Description

The NT 65/2 Ap is a powerful wet and dry vac with the ApClean system, which ensures constant high suction power and long working intervals. The vacuum features a compact turbine housing with integrated filter cover for easily removing the large flat pleated filter. It is effectively cleaned with the help of the semi-automatic ApClean filter cleaning system. This ensures constant high suction power, longer working intervals and a long service life of the filter. The NT 65/2 Ap features electronic fill level detection for wet vacuuming. It prevents the maximum permitted fill level from being exceeded. The problem-free disposal of vacuumed fluids is made possible by the attached oil-resistant drain hose. Accessories can be quickly and easily connected to the vacuum using the clip system. The unit features a hose storage device, an accessory holder and a large tray e.g. for tools. The required mobility of the NT 65/2 Ap is provided by two large fixed wheels and two guide rolls.

---

### Features & Benefits

On-board practical storage

On-board practical tool and accessory storage.

Integrated drain hose (oil-resistant)

Easily accessible drain hose for convenient liquid disposal.

ApClean (semi-automatic filter cleaning system)

The free filter means that the user can work for long intervals without interruption.

Optimal suction power with high efficiency.

Hose and bend attachment

Convenient suction hose and bend attachment for easy transport and storage.

---

## Accessories

### Adapter (tube -> nozzle)

#### Adapter

From DN 40 to DN 61: Plastic adapter (electrically non-conductive). Suitable for NT vacuum cleaners.

**Order number 5.453-019.0**



### Adapter for electric power tools, clip on, el.

#### Power tool adapter C 35, el.

3-way plastic adapter. For DN 26 to DN 36. For connecting power tools to an industrial C or C-DN 35 suction hose. Suitable for NT vacuum cleaners.

**Order number 5.453-042.0**



#### Power tool adapter C 35, electrically conductive

Inside Ø 25.4 mm, outside Ø 34.6 mm/ 38 mm, electrically conductive. Only NT vacuums.

**Order number 5.453-048.0**



#### Connecting sleeve for electric tool C 35, el.

Inner Ø 28.6 mm, outer Ø 37.3 mm/ 38.8 mm, el. Only NT-vacuums.

**Order number 5.453-049.0**



#### Power tool adapter C 35, electrically conductive

Inside Ø 27 mm, outside Ø 36.5 mm/38.8 mm, electrically conductive. Only NT vacuums.

**Order number 5.453-050.0**



#### Connecting sleeve for electric tool C 35, el.

Inner Ø 32 mm, outer Ø 39 mm, el. Only NT-vacuums.

**Order number 5.453-051.0**



#### Connecting sleeve for electric tools C 35, el.

Inner Ø 28 mm, outer Ø 34 mm/ 38.8 mm, el. Only NT-vacuums.

**Order number 5.453-052.0**



### Adapter for electric power tools, screwable

#### Power tool adapter, threaded, ID 35

3-way plastic adapter with fitting instructions. For DN 26 to DN 36. For connecting to an industrial DN 35 suction hose.

**Order number 5.453-016.0**



## Adapter for electric power tools, screwable

### Power tool adapter, threaded, ID 35

Inside Ø 28.6 mm, outside Ø 37.3/38.8 mm.

Order number 5.453-026.0



### Power tool adapter, threaded, ID 35

Electrically conductive power tool adapter, threaded. Internal diameter: 32 mm. External diameter: 39 mm.

Order number 6.902-059.0



### Power tool adapter, threaded, ID 35

2-way power tool adapter, threaded. For connecting to an industrial DN 35 suction hose. Internal diameter: 28 mm. External diameter: 34 mm and 38.8 mm. Suitable for NT vacuum cleaners.

Order number 6.902-095.0



## All-purpose brushes

### All-purpose brush

Natural bristles (ox hair), bristle element 120 x 45 mm.

Order number 6.903-863.0



## All-purpose nozzles (wet/dry)

### All-purpose nozzle (wet / dry), plastic, ID 40, 360 mm

All-purpose plastic nozzle (DN 40) with 360 mm working width. With side rollers, brush strips (6.905-878.0) and squeegees (6.905-877.0). Only for NT vacuum cleaners.

Order number 6.906-554.0



### All-purpose nozzle (wet / dry)

All-purpose aluminium nozzle with 370 mm working width. With height-adjustable side rollers, brush strips (6.903-064.0) and oil-resistant squeegees (6.903-081.0). Only for NT vacuum cleaners.

Order number 6.903-018.0



### All-purpose nozzle (wet / dry)

All-purpose aluminium nozzle (DN 40) with 450 mm working width. With height-adjustable side rollers, brush strips (6.903-065.0) and oil-resistant squeegees (6.906-146.0). Only for NT vacuum cleaners.

Order number 6.906-383.0



### All-purpose nozzle (wet and dry), DN 35

All-purpose aluminium nozzle (DN 35) with 370 mm working width. With height-adjustable side rollers, brush strips (6.903-064.0) and oil-resistant squeegees (6.903-081.0). Only for NT vacuum cleaners.



## All-purpose nozzles (wet/dry)

Order number 6.906-384.0

### All-purpose nozzle (wet / dry)

All-purpose plastic nozzle (DN 35) with 360 mm working width. With side rollers, brush strips (6.905-878.0) and squeegees (6.905-877.0). Only for NT vacuum cleaners.



Order number 6.906-513.0

## Bend metal

### Bend, ID 35, metal

Robust, chromium-plated metal bend (DN 35), can be used instead of a plastic bend (with clip system adapter 5.407-112.0; C 35-DN 35, plastic, el.).



Order number 6.900-519.0

### Bend, ID 40, metal

Robust, chromium-plated metal bend (DN 40), can be used instead of a plastic bend (with clip system adapter 5.407-111.0; C 40-DN 40, plastic, el.).



Order number 6.900-276.0

## Bend stainless

### Bend, stainless steel, ID 35

Stainless steel and crooked, ID 35



Order number 6.903-141.0

### Bend, stainless steel, ID 40

Stainless steel and crooked, ID 40



Order number 6.902-079.0

## Car cleaning nozzles

### Car vacuuming nozzle, ID 40, 90 mm

Angled, flat, plastic car vacuuming tool with about 90 mm working width. Only for NT vacuum cleaners.



Order number 6.900-952.0

## Connecting sleeve C-DN (clip on taper), EL (electroconductive)

### C-ID 35 adapter

C 35 hose connector for DN 35 accessory, electrically conductive.

Order number 5.407-112.0



### C 40 adapter

Electrically conductive adapter (C 40) with DN 35 connection for connecting DN 35 accessories to an industrial C 40 or C-DN 40 suction hose. Suitable for NT vacuum cleaners.

Order number 5.407-109.0



## Connecting sleeve C-DN (clip on taper), EL (electroconductive)

### C-ID 40 adapter

C 40 hose connector for DN 40 accessory, electrically conductive.

**Order number 5.407-111.0**



## Connecting sleeves

### Adapter, ID 32/35, with internal thread

Electrically non-conductive adapter with internal thread. For connecting two suction hoses without connectors. Suitable for DN 32 or DN 35.

**Order number 6.902-077.0**



### Adapter, ID 40, with internal thread

Electrically non-conductive adapter with screw thread at both ends. For connecting 2 DN 40 suction hoses without connectors.

**Order number 6.900-286.0**



### Connecting sleeve, ID 61, with female thread

For connecting 2 suction hoses, thread on both sides

**Order number 6.902-078.0**



## Crevice nozzles

### Crevice tool

Plastic crevice tool (DN 40) for vacuuming in crevices and corners. Length: 290 mm.

**Order number 6.903-033.0**



### Crevice tool

Plastic crevice tool (DN 35) for vacuuming in crevices and corners. Length: 210 mm.

**Order number 6.900-385.0**



### Crevice tool

Plastic crevice tool (DN 35) for vacuuming in crevices and corners. Length: 370 mm.

**Order number 6.900-922.0**



### Crevice tool

Metal crevice tool (DN 40) for vacuuming in crevices and corners. Length: 400 mm.

**Order number 6.905-817.0**



## Crevice tools

### Grout nozzle, synthetic

Grout nozzle, plastic, 370 mm

Order number 6.900-222.0



### Grout nozzle, stainless steel

Grout nozzle, stainless steel, 400 mm

Order number 6.900-926.0



## Extension hoses (Clip-system)

### Extension hose, C 40

2.5 m electrically non-conductive standard extension hose for all C-40 hoses with clip system.

Order number 6.906-344.0



## Flat pleated filter (paper)

### Flat pleated filter

Paper flat pleated filter (BIA-(U,S,G,C) dust class M) suitable for NT 65/2 Eco, NT 65/2 Eco Tc, NT 65/2 Eco Me.

Order number 6.904-283.0



## Flat pleated filter (PES)

### Flat pleated filter (PES)

Flat filter (PES) - BIA-(U,S,G,C) dust class M: rotproof polyester fleece, ideal for wet use and abrasives. Standard for NT 72/2 Eco Tc.

Order number 6.904-284.0



## Floor nozzles

### Floor nozzle, complete

Aluminium, oil-proof, 500 mm, with height-adjustable rollers, strips (6.903-067.0) and rubber lips (6.906-168.1)

Order number 4.130-413.0



## HEPA filter for dust class H

### HEPA flat fold filter

HEPA surface filter - dust class H (H 14) - with glass-fibre layers increases filter capacity when vacuuming health-endangering and carcinogenic dust.

Order number 6.904-364.0



## Membrane filter / fabric filter

### Membrane filter / fabric filter

Polyester needle fleece membrane/fabric filter - BIA-C -, washable up to 40°C, metal fibres for earthing. Suitable for virtually all industrial two-motor NT vacuum cleaners.

**Order number 6.904-282.0**



## Miscellaneous

### Extension cable

Extension cable, 20 m, 3x1.5 mm<sup>2</sup>. With splash-proof earthing pin plug, strain relief and anti-kink sleeve.

**Order number 6.647-022.0**



## Other accessories for T and NT

### Pre-separator

Complete container (80 litre) and lid (ID 61). For coarse dirt and fluids (without suction hose).

**Order number 3.864-010.0**



### Drum separator

Metal, from DN 61 to 61, only for liquids.

**Order number 3.864-012.0**



### Lid for separator

For 6.902-051.0/4.070-111.0 and NT 802 I container

**Order number 4.063-132.0**



### Adapter ring for 200 l drum

Ring adapter for EURO steel drum (200 l) with lid but in connection with additional lid (separator) 4.063-132.0.

**Order number 6.902-051.0**



## Other nozzles

### 45° rubber suction nozzle

Angled 45°, for suction of machines, oil-resistant

**Order number 6.902-106.0**



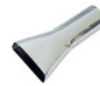


## Other nozzles

### Metal scratcher and scraper nozzle

Scratcher and scraper tool DN 61, sheet metal, 117 mm

Order number 6.903-360.0



### Aluminium surface nozzle

Flat surface nozzle cpl. DN 51, 200 mm, aluminium with brush and stainless steel bumper

Order number 4.130-415.0



## Paper filter (2 ply)

### Paper filter bags

5 3-ply, tear-resistant paper filter bags. BIA-(U, S, G, C) dust class M. For all NT 48/1, NT 65/2 Eco + Me and NT 72/2 Eco Tc models.

Order number 6.904-285.0



## Pipe dusting nozzles

### Pipe dusting nozzle, ID 35

Plastic, pipe diameter 100 mm

Order number 6.903-035.0



### Pipe dusting nozzle

Plastic, pipe diameter 200 mm

Order number 6.903-036.0



## Plastic bend

### Plastic bend

Plastic bend (DN 40) with C-40 clip system, suitable for all NT models.

Order number 5.031-904.0



### Plastic bend

Plastic bend (DN 35) with C-35 clip system. For all industrial single-motor NT 361 to NT 611 Eco models (except NT Eco M and NT Eco H).

Order number 5.031-718.0



### Plastic bend

Electrically conductive plastic bend (DN 35) with C-35 clip system. For all industrial single-motor NT 361 to NT 611 Eco models.

Order number 5.031-939.0



### Plastic bend

Electrically conductive plastic bend (DN 40) with C-40 clip system, suitable for all NT vacuum cleaners.

Order number 5.032-427.0



## Plastic sacks for dust-free disposal

### Plastic sack for dust-free disposal

PE plastic sack.

Order number 6.900-698.0



## Radiator brushes

### Radiator brush

Radiator brush is suitable for crevice tool 6.900-385.0 or 6.905-240.0.

**Order number 6.903-034.0**



## Reducer (tube -> nozzle)

### Reducer

Reducer for accessory extension. Ideal for accessories with DN 35 connecting cone in combination with accessories with DN 40 connecting cone.

**Order number 6.902-017.0**



### Reducer from ID 35 to 32

Reducer with internal connecting cone DN 32. Ideal for accessories from the industrial vacuum cleaner range in combination with industrial NT vacuum cleaners.

**Order number 6.902-072.0**



## Reducing sleeves

### Reducer

Threaded reducer - from C-40 to DN 35. Suitable for NT vacuum cleaners.

**Order number 5.407-108.0**



### Reducer

Reducer (C 40 to C 35) for connecting accessories with C-35 clip connection to suction hoses with C 40 clip system.

**Order number 5.407-113.0**



## Repair kits

### Repair set, C 40

Repair set (C40) includes threaded hose adapters (without bayonet adapter) for industrial NT vacuum cleaners with clip system.

**Order number 2.639-873.0**



### Repair kit, ID 61

Suction hose repair kit. Optional for all NT 65/2 and 72/2, NT 993 I, NT 802 I.

**Order number 2.862-038.0**



## Rubber suction tools, nose 45°

### Rubber suction tool, nose 45°

45° rubber suction nozzle (DN 35), oil-resistant and suitable for vacuuming machines. Only for NT vacuum cleaners.

**Order number 6.902-104.0**



### Rubber suction tool, nose 45°

45° rubber suction nozzle (DN 40), oil-resistant and suitable for vacuuming machines. Only for NT vacuum cleaners.

**Order number 6.902-105.0**



## Rubber tool

### Rubber nozzle, ID 40

Rubber.

**Order number 4.763-057.0**



## Set reducing / extension sleeves

### Set of reducers / adapter sleeves

DN 40/35, DN 35/32 (tube -> nozzle), plastic.

Order number 2.860-117.0



## Special filter bags, wet filter bags

### Special filter bags, wet filter bags

Approved for dust class L, general cleaning, wet and dry, tear-resistant.

Order number 6.904-252.0



## Suction brushes

### Suction brush, ID 35, natural bristles

Rotatable suction brush (DN 35) with natural bristles (cow hair). Bristle size 70x45 mm. Only CV and NT vacuum cleaners.

Order number 6.903-862.0



## Suction hoses (Clip-system)

### Suction hose

4 m suction hose with bayonet and C 40 clip connection. Without bend and adapter.

Order number 6.906-321.0



### Suction hose

10 m standard suction hose without bend and adapter. With bayonet at vacuum end and C 40 clip connection at accessory end.

Order number 6.906-279.0



### Suction hose

With bayonet and clip connection.

Order number 6.906-714.0



### Suction hose

Electrically conductive, 4 m suction hose with bayonet and C 40 clip connection. Without bend and adapter.

Order number 6.906-546.0



### Suction hose

With bayonet and clip connection.

Order number 6.906-635.0



### Suction hose

Suction hose with bayonet coupling, electrically conductive.

Order number 6.906-877.0



## Suction hoses complete

### Suction hose, complete

4-m standard suction hose with DN 61 bayonet connector at the device end and DN 61 tapered connector at the accessory end.

Order number 4.440-264.0



## Suction hoses complete

### Suction hose, complete

Industrial hose, PVC/elastomer with steel spiral, smooth inside

Order number 4.440-328.0



### Suction hose, complete, ID 61, 10 m

10-m standard suction hose with DN 61 bayonet connector at the device end and DN 61 tapered connector at the accessory end.

Order number 4.440-467.0



### Suction hose, complete, DN 61, 4 m, oil-resistant

Oil-resistant.

Order number 4.440-613.0



### Suction hose, complete, DN 61, 10 m, oil-resistant

Oil-resistant.

Order number 4.440-614.0



### Suction hose complete, ID 61, 4 m, el.

Electrically conductive.

Order number 4.440-616.0



### Suction hose, complete

Electrically non-conductive 4.0m standard suction hose with bayonett at vacuum end and DN 40 cone at accessory end.

Order number 4.440-263.0



### Suction hose, complete

Oil-resistant

Order number 4.440-303.0



## Suction hoses complete

### Suction hose, complete

Electrically non-conductive 10.0m standard suction hose with bayonett at vacuum end and DN 40 cone at accessory end.

**Order number 4.440-463.0**



### Suction hose complete

Electrically conductive, 10.0m, ID 40

**Order number 4.440-466.0**



### Suction hose, complete, DN 40, 10 m, oil-resistant

Oil-resistant.

**Order number 4.440-612.0**



## Suction hoses complete (Clip-system)

### Suction hose

4 m electrically non-conductive suction hose with bend, bayonet at vacuum end and C 40 clip connection at accessory end. Without module.

**Order number 4.440-678.0**



### Suction hose, complete (clip system), C ID 40, 4 m

4 m electrically non-conductive suction hose with bend (C-DN 40) and module (4.060-474.0), bayonet at vacuum end and C 35 clip connection at accessory end.

**Order number 4.440-679.0**



### Suction hose, complete (clip system), C-ID 40, + PFC module, electrically conductive

With bend and module (4.060-533.0), electrically conductive.

**Order number 4.440-728.0**



## Suction tubes metal

### Suction tube

Chromium-plated metal suction tube (DN 40, 1x0.5 m), standard for virtually all two-motor industrial vacuum cleaners. Optional for industrial single-motor NT vacuum cleaners with DN 40 suction hose.



## Suction tubes metal

Order number 6.900-275.0

### Suction tube

Chromium-plated metal suction tube (DN 35, 1x0.5 m), standard for virtually all single-motor industrial NT vacuum cleaners.

Order number 6.900-514.0



## Suction tubes stainless steel

### Suction tube, ID 40

Stainless steel suction tube (DN 40, 0.5 m) only suitable for NT vacuum cleaners.

Order number 6.902-081.0



### Suction tube, ID 40

Stainless steel suction tube (DN 40, 1.0 m) only suitable for NT vacuum cleaners.

Order number 6.906-531.0



### Suction tube, ID 35

Order number 6.902-154.0



## Target group specific vacuum cleaner accessory sets

### Professional cleaning kit ID 40

Individual parts: Suction hose 4 m (4.440-263.0), bend, metal (6.900-276.0), suction tube 2 x 0.5 m, metal (6.900-275.0), grout nozzle (6.903-033.0), floor nozzle with rollers (6.903-051.0).

Order number 2.637-353.0



### Car cleaning kit

Target group-specific accessory nozzles in DN 35 for interior cleaning of vehicles, upholstery fixtures.

Order number 2.862-166.0



### Industry set

Target group-specific robust complete accessory set in DN 61 for vacuuming coarse dirt in industry, construction etc.

Order number 2.637-355.0



### Chip cleaning kit

Target group-specific robust connection set in DN 61 for cleaning in conjunction with oil-resistant suction hose and rubber nozzle.

Order number 2.640-760.0



## Target group specific vacuum cleaner accessory sets

### Bus kit

Accessory kit for vacuuming and cleaning buses, train compartments, etc., in combination with the recommended NT vacuum cleaner.

**Order number 2.640-560.0**



### Y-adapter kit

#### Y-adapter kit

Plastic distributor - suitable for NT vacuum cleaners.

**Order number 2.637-217.0**

